

NATIONAL EXAMS MAY 2003

98-CIV-B1 ADVANCED STRUCTURAL ANALYSIS

3 HOURS DURATION

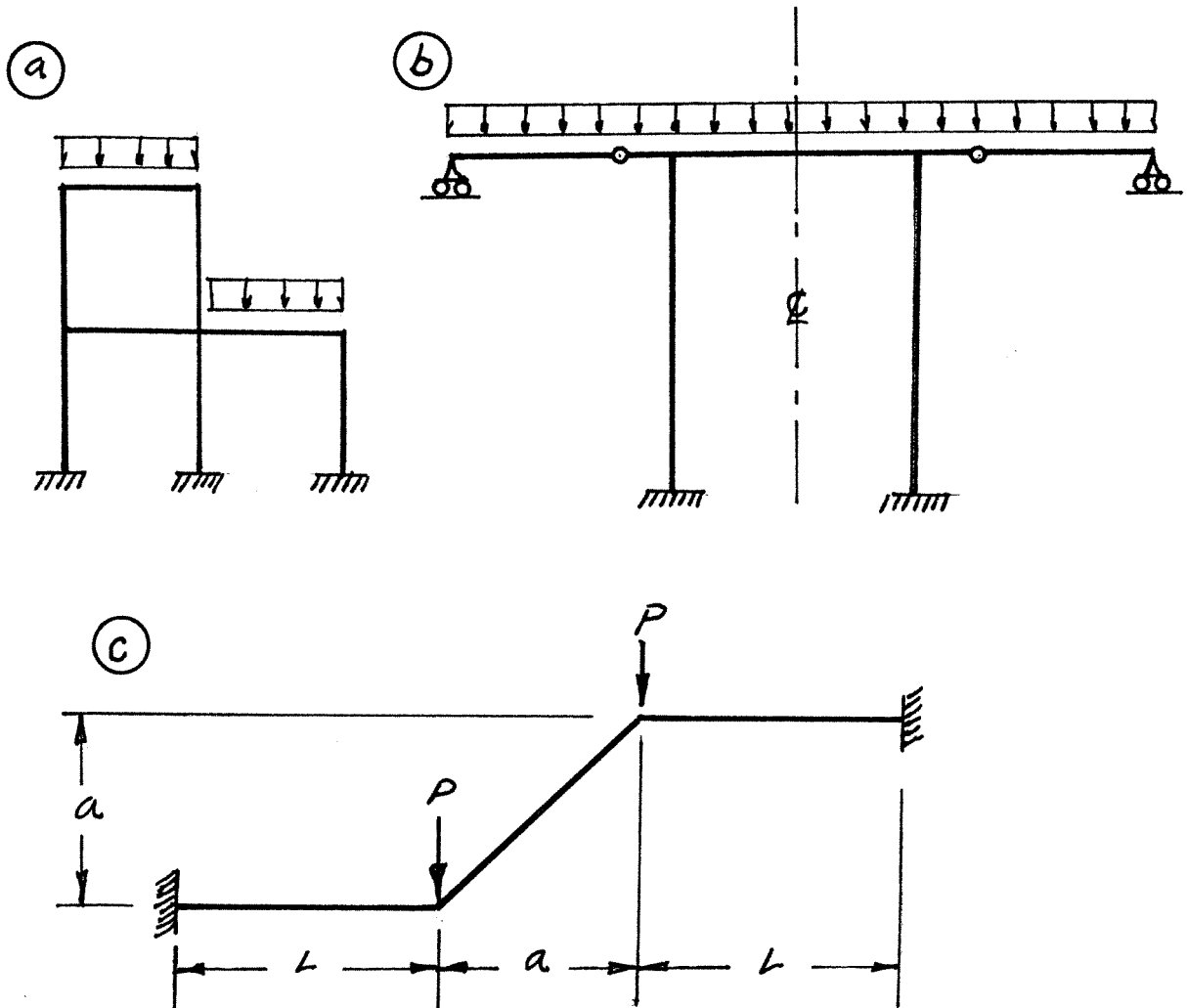
NOTES:

1. If doubt exists as to the interpretation of any question, the candidate is urged to submit with the answer paper a clear statement of any assumption made.
2. Candidates may use one of two calculators, a Casio FX-991 or a Sharp EL-540; otherwise, this is a CLOSED BOOK Examination.
3. Answer BOTH questions #1, and #2. Answer ONLY TWO of questions #3, #4, or #5. Answer ONLY TWO of questions #6, #7, #8 OR #9. SIX questions constitute a complete paper.
4. The marks assigned to each question are shown in the left margin.

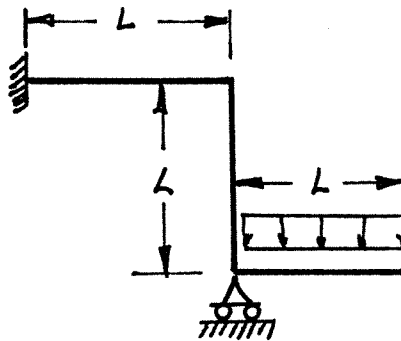
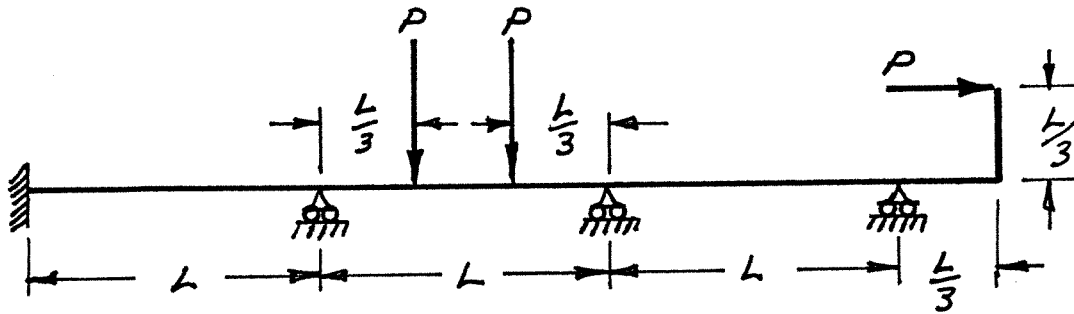
FRONT PAGE

QUESTION #1 MUST BE ANSWERED.

- (8) 1. a) Determine the statical indeterminacy,  $r$ , of the structures shown below.
- b) Indicate with arrows (↻ a rotation; → a translation) on each structure and list beside each structure the number of structural degrees of freedom,  $k$ , that are required to do an analysis by the slope-deflection method. In each case, use the minimum number of structural degrees of freedom; where they occur, take into account symmetry, anti-symmetry and joints that are known to have zero moments.

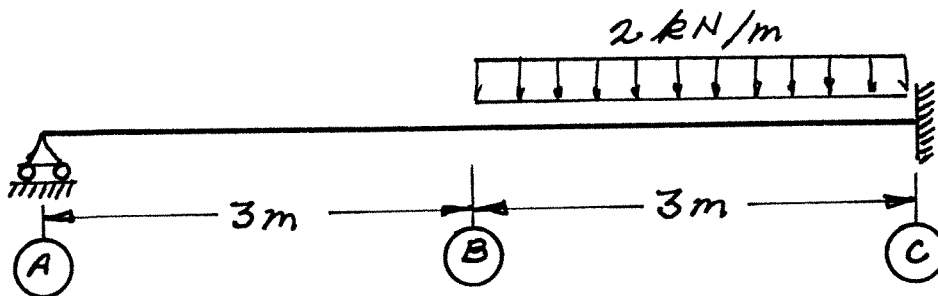


- (12) 2. Schematically show the shear force and bending moment diagrams for the following structures. All members have the same EI and are inextensible.



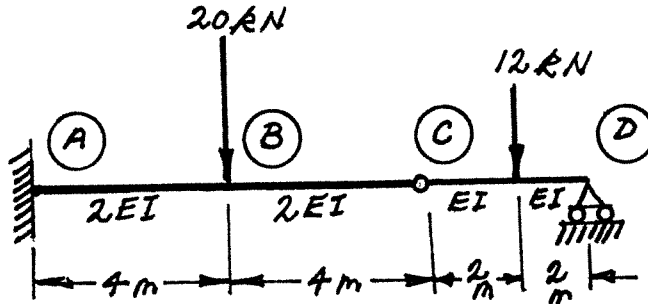
SELECT AND ANSWER TWO QUESTION ONLY FROM QUESTIONS 3, 4, OR 5.

- (16) 3. Use Castigliano's theorem (the least work theorem) to analyze the structure shown. Calculate the bending moment and shear on the beam at point C. The beam has constant EI and is inextensible.

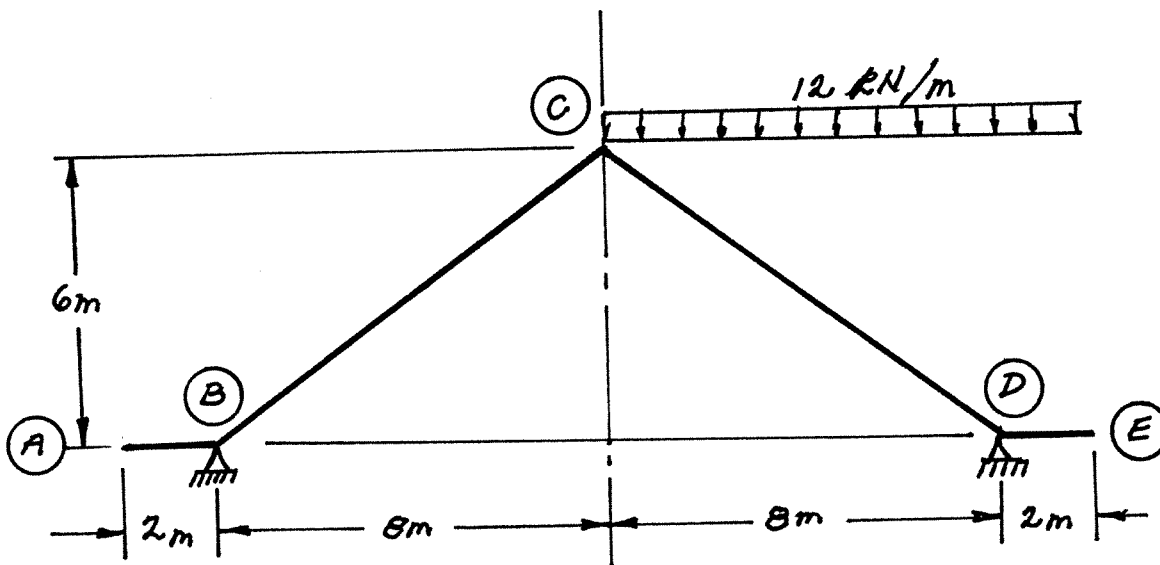


SELECT AND ANSWER TWO QUESTION ONLY FROM QUESTIONS 3, 4, OR 5.

- (16) 4. Use Castigliano's theorem to determine the vertical deflection at point C on the structure shown.  $EI = 62500 \text{ kN.m}^2$ .

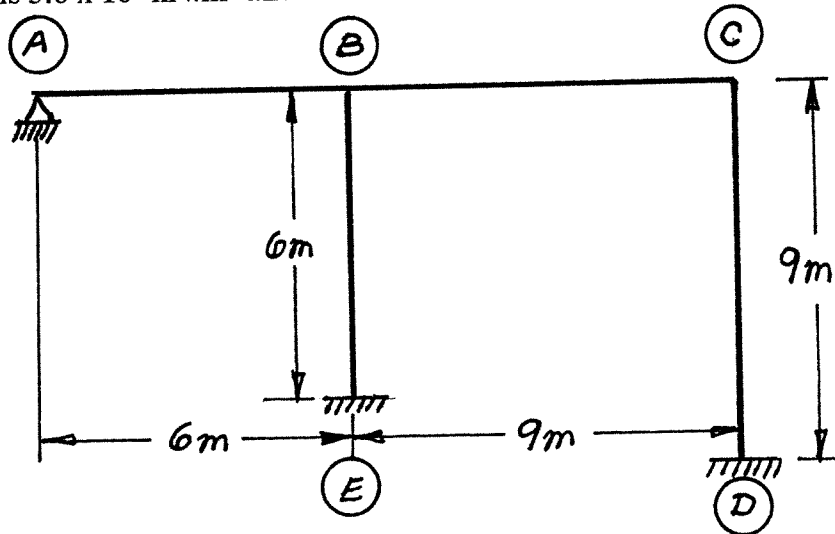


- (16) 5. For the structure shown below, using the slope-deflection or moment-distribution methods, calculate and plot the shear force and moment diagrams. All members have the same  $EI$  and are inextensible.

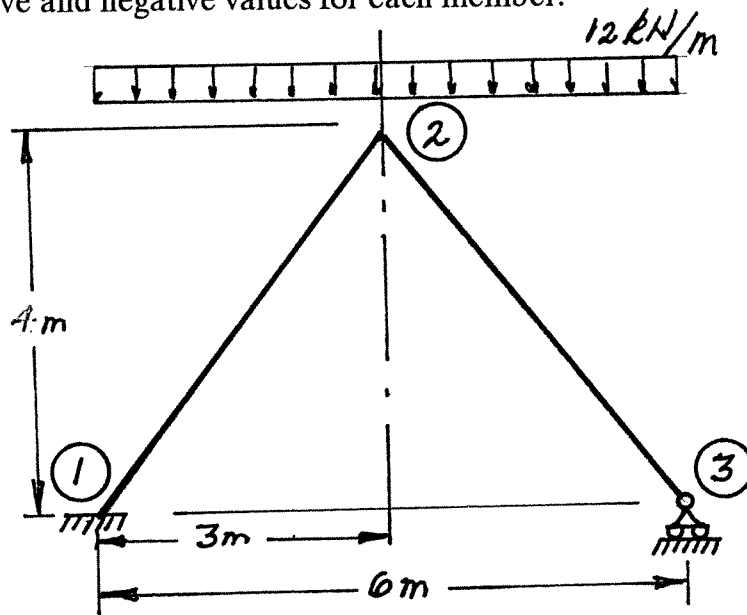


SELECT AND ANSWER TWO QUESTIONS ONLY FROM QUESTIONS 6, 7, 8 OR 9.

- (24) 6. Use the slope-deflection method to analyze the frame structure shown. Draw shear and bending moment diagrams. Indicate on both diagrams the magnitude of maximum and minimum ordinates. There are no loads on the structure, but member AB was intended to be exactly 6 m long; however, it was manufactured 6.025 m long and forced into place. All members of the structure have the same EI value that is  $5.0 \times 10^4 \text{ kN.m}^2$  and all members are inextensible

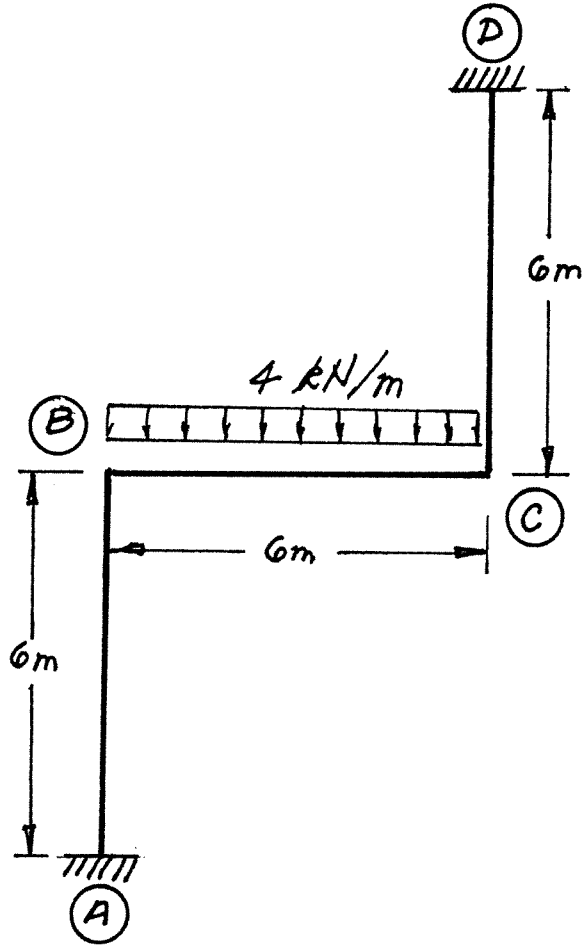


- (24) 7. Using a flexibility (force) method, analyze the frame structure shown. Both members have the same EI value and are inextensible. Draw shear force and bending moment diagrams. On each diagram indicate the magnitudes of the maximum positive and negative values for each member.



SELECT AND ANSWER TWO QUESTION ONLY FORM QUESTIONS 6, 7, 8 OR 9.

- (24) 8. Using the slope-deflection method, analyze the frame structure shown below. Plot shear force and bending moment diagrams. For each member on each diagram, indicate the magnitude of the maximum positive and negative values. All members are inextensible and have the same EI value. Sidesway is not prevented.



- (24) 9. a) For the frame shown, derive the equilibrium equation for translation at joint 2. Neglect the effects of axial strain. All members have the same EI value.
- b) Derive the equilibrium equations for moment equilibrium at joints 2 and 3.
- c) Present your results in matrix form by giving the terms of the stiffness matrix [K] and the load vector {P} in the following equation:

$$[K] \begin{Bmatrix} \delta \\ \theta_2 \\ \theta_3 \end{Bmatrix} = \{P\}$$

**DO NOT SOLVE THE EQUATIONS.**

The unknowns of the problem shall be:

$\delta$  = translation at joint 2 (positive to the right)

$\theta_2$  = rotation of joint 2

(counter clockwise positive)

$\theta_3$  = rotation of joint 3

